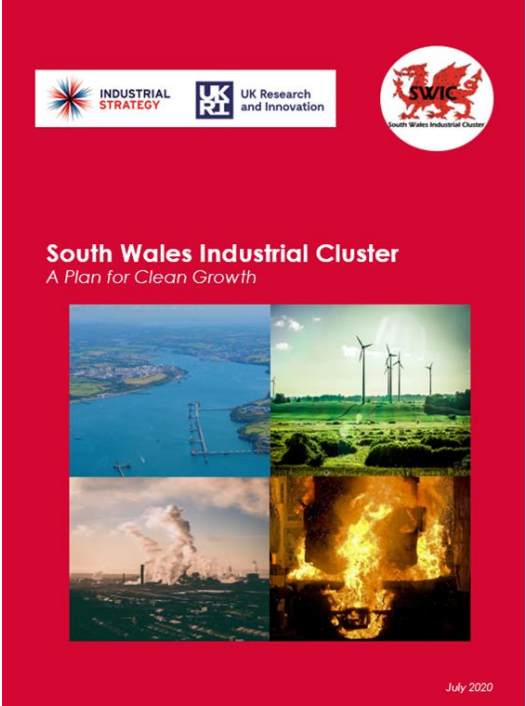


Developing a South Wales Industrial Cluster

- Steel, Oil, Cement, Chemicals, Nickel, Insulation, Paper, General Manufacturing
- Pembroke CCGT, Biomass and EFW stations
- 10 MTPA Industry + 6 MTPA Power



Key finding: it would be feasible for South Wales to transport its CO2 to other potential CCS hubs for permanent storage

Figure 31: Options for South Wales to ship CO2 to other ports¹⁸

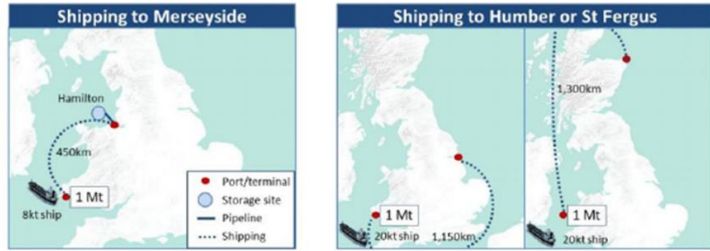
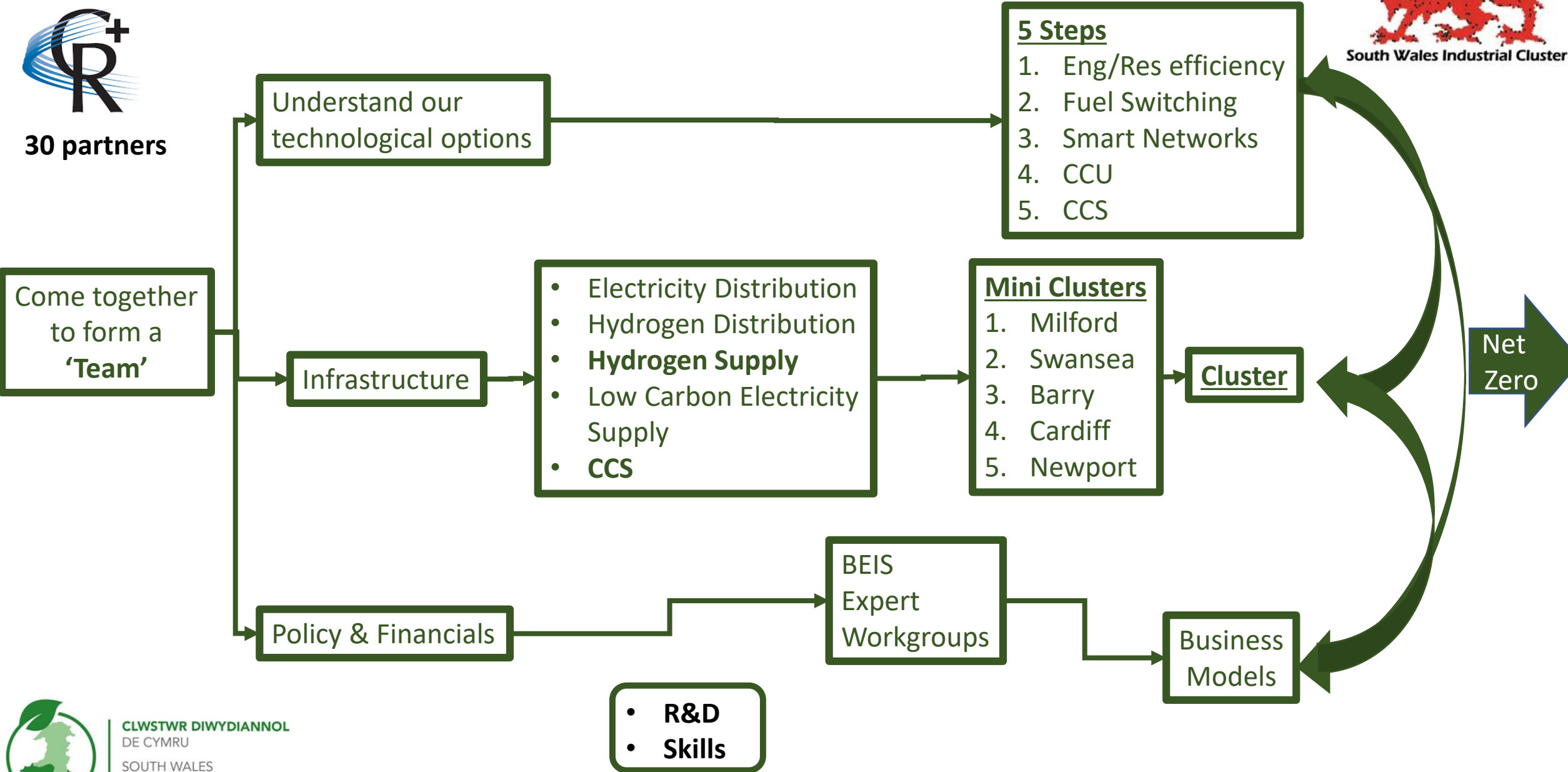


Figure 32: Unit costs of shipping CO2 from South Wales (undiscounted)



Cluster Plan: 'A Plan for Clean Growth' (Feb '21 to March '23)



Cluster Plan – Elements of the Jigsaw



Clean Energy Generation

Carbon Capture Storage

Clean Energy Distribution

Site Users (Demand Side)

Define the need for the above infrastructure

CCUS & Smart Networks offer Clean Growth *(across the spatial spectrum)*

Stakeholder Management

(Entity + Touch-Points with City's, Transport, Commercial & Public Sectors to establish infrastructure boundary conditions)

**Academic Interaction
Skills & Resources,
Horizon Projects**

Cluster Plan – Integration

**Economics of Decarbonisation
Business Models & Finance,
Legal/Legislative**

Technology & Service providers

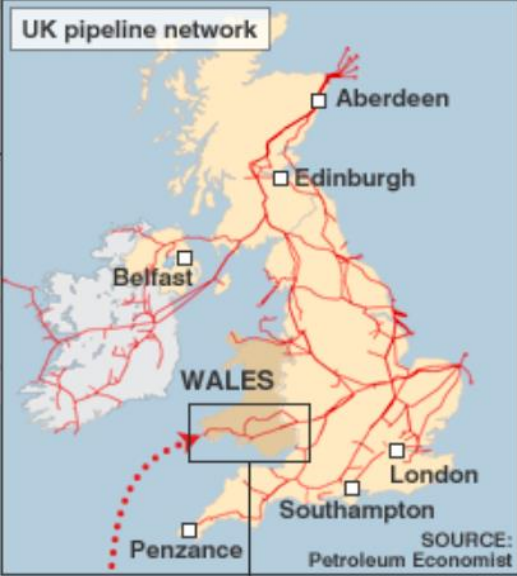
We Need All Pieces

Cluster Plan currently is providing a forum covered by a comprehensive collaboration agreement for Partners & Participants to come together to work on a plan that is deliverable.

SWIC Cluster Plan Covers 16MtCO₂ scope 1 emissions.

Real Opportunity

To develop collaborative working and gain hi-level insights into plausible pathway to Net Zero Carbon using Circular Economy Pathways



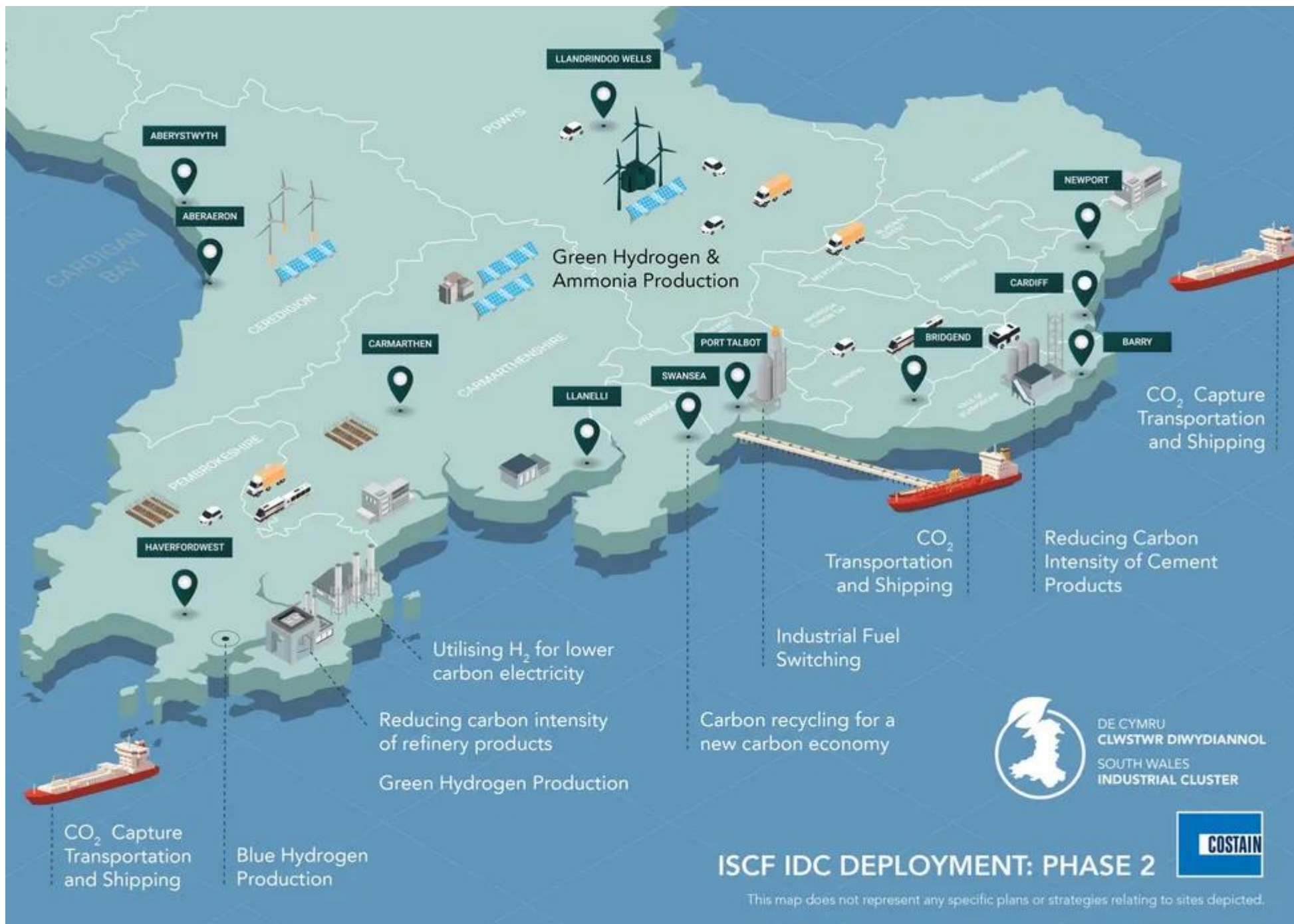
“Developing the art of the possible for decarbonising South Wales”



South Wales Industrial Cluster

Deployment Project

Developing the Infrastructure to enable Industrial Decarbonisation



CLWSTWR DIWYDIANNOL
DE CYMRU
SOUTH WALES
INDUSTRIAL CLUSTER