

SECTORS



Highways



Power Lines



Roads



Railways



Ports



Urban Transport



Airports



Decommissioning

ENG. FRANCESCO VENTURA - CEO



ENVIRONMENTAL AND ENERGY ENGINEERING CONSULTANCY

ABOUT US

- Since 1990 VDP is an Engineering Company specialized in Environmental studies based in Rome – Italy
- Covering all the project cycle, from the feasibility study to the detailed engineering and, after the construction, the control/monitoring of the results
- Support to both public corporate bodies and private organizations and companies

SPECIALIZATION



EIA and SEA



Pre-feasibility studies



Environmental Mitigation Design



Energy and Carbon Management



Environmental monitoring



Preliminary Archaeology



FOCUS ON ENERGY WORKS

OUR SERVICES

EIA and Permitting

Environmental Monitoring

SITE Environmental assistance (construction phase)

WHAT

Power line Interconnection

Gas Pipeline Interconnection

Waste to Energy Plants

Power Plants

WHERE

- Valle Isarco (Trentino Alto Adige)
- Villanova Gissi (Abruzzo)
- Catanzaro Calusia (Calabria)
- Sorgente Rizziconi (Sicily-Calabria)
 - Paternò Belpasso (Sicily)
 - Paternò Priolo (Sicily)
- Isole Campane(Campania)
- San Vittore del Lazio (Lazio)
- Italy – Austria Interconnector
- Italy – Malta Interconnector and Gas Pipeline
 - Israel



ITALY

MALTA



ISRAEL

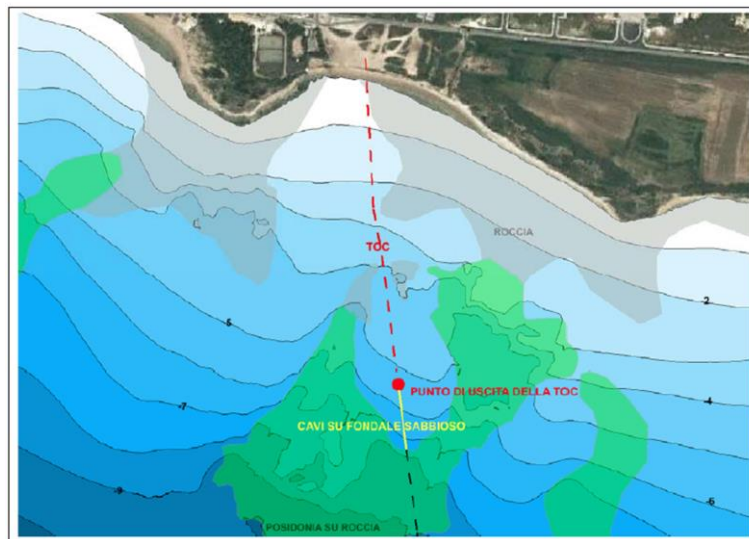


FOCUS ON EIA FOR POWER LINES -INTERCONNECTORS

Project by: TRANS – European Energy Network,
INTERCONNECTOR ITALY – MALTA

Funded by: European Energy Program for Recovery Plan

- Assistance for Authorization
- EIA procedure and monitoring database for sea and land interconnection power line
- Following the project from the **preliminary design** stage to its **construction**





KEY ENVIRONMENTAL ISSUES

Analysis of emissions, acoustic and atmospheric emissions monitoring during construction phase

Environmental Monitoring Project

Mapping of biotic community and verification of impact on cetaceans

Natural Protected Areas and “Siti Natura 2000”

Precise verification of electromagnetic fields (DPA bands)

Archaeological evidences and underwater archeology

Ante - Post operam and Construction Phase Monitoring

Environmental surveys air, soil, water, marine ecosystem

Landscape analysis and Rendering

DESIGNING TOGETHER WITH THE ENVIRONMENT

Malta-Italy GAS PIPELINE interconnection

OUR AIM INVOLVING:

NATIONAL AND LOCAL GOVERNMENTS

STAKEHOLDERS

ENVIRONMENTAL PROTECTION AGENCY

AND THEN..

- Development of **an innovative methodology** for the installation of Marine Cable
- **Minimizing** the Environmental Impact of Interconnections on marine ecosystem
- Use of the **best technologies** to minimize environmental impacts

Prevent possible coastal erosion



Preserve and protect the Posidonia seagrass

